



Double-hand foldable set

Applicable for a series gimbal

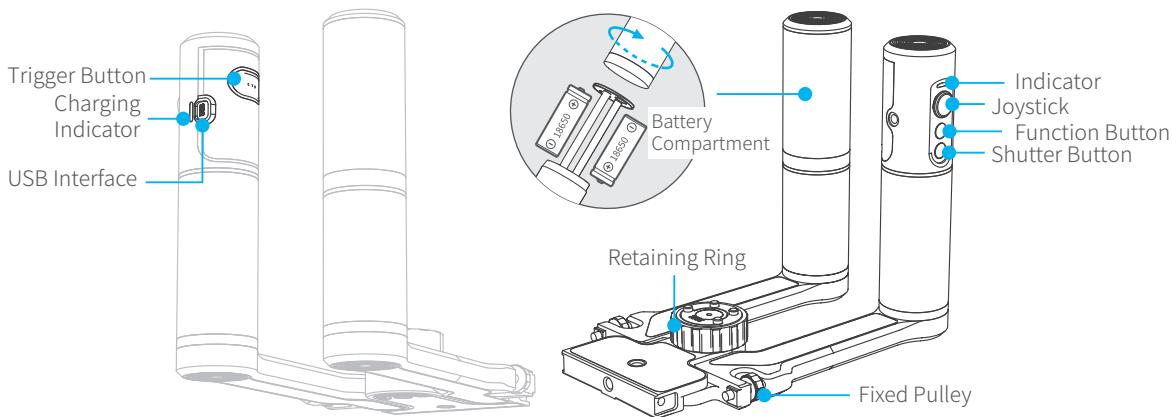
Guilin Feiyu Technology Incorporated Company

User Manual EN V1.0

1.Product Overview

Tips: 1. The connectors on the foldable set are fitted with 1/4-inch threaded holes.

2. Refer to the a series product manual for functions and operation.



Basic Accessories



USB Cable



Battery X2
(Type: 18650)



Smart Charger



1/4 Inch Screw

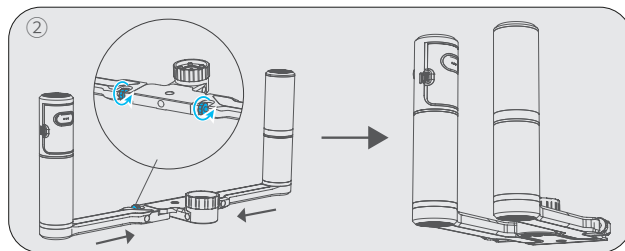
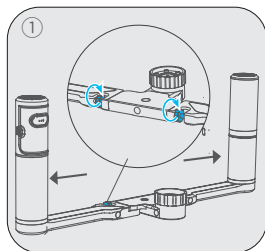


Cold Shoe
Mount

2.Operation Mode

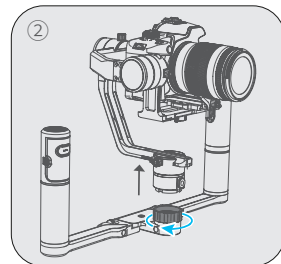
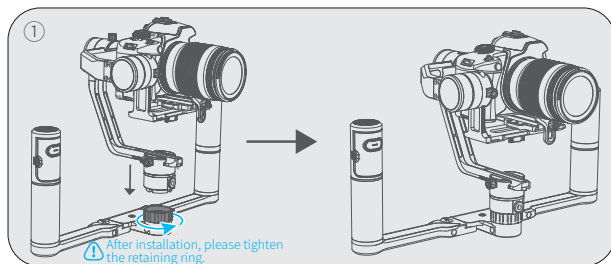
1 Expansion and closure of folding arm:

①Expand the folding arm and tighten the two fixed pulleys at the interface;②Loosen the two fixed pulleys at the interface and close the folding arm.



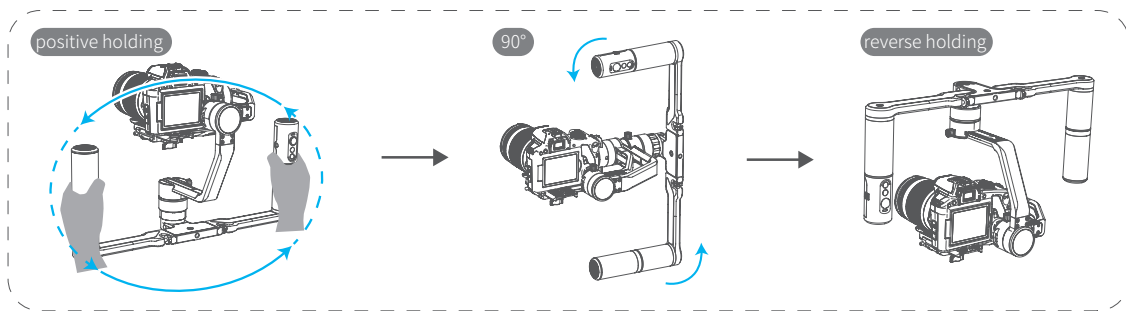
2 Installation and disassembly of a series gimbal:

①Install the a series gimbal, tighten the retaining ring;②Loosen the retaining ring and remove the a series gimbal gently.

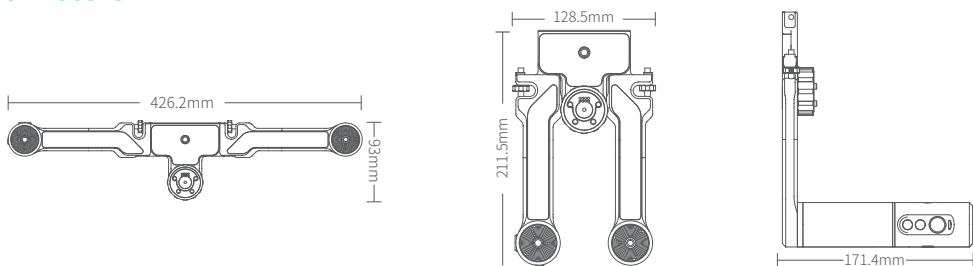


3.Usage Way

Double-hand foldable set can be used in many ways, such as positive holding and reverse holding. Turn positive holding to reverse holding as shown in the following, in positive holding, both hands hold the hand grip, began to rotate, turn to 90 degrees, alternating hands, continue to rotate 90 degrees, to the back of reverse holding.



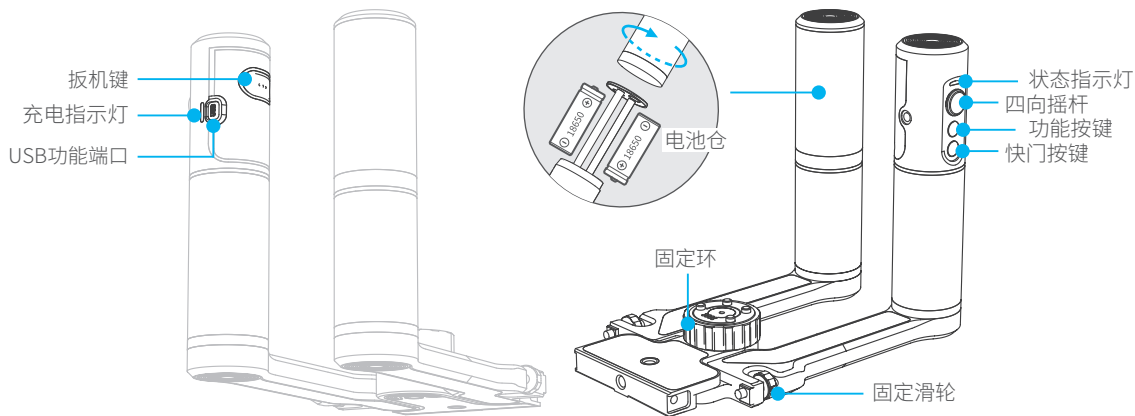
4.Parameters



1. 产品概览

注：1. 双手持折叠臂上安装外接配件的接口均为1/4英寸螺纹孔。

2. 具体功能和操作方式请参考a系列产品说明书。



基础配件



USB数据线



18650电池X2



多用充电器



1/4英寸螺丝

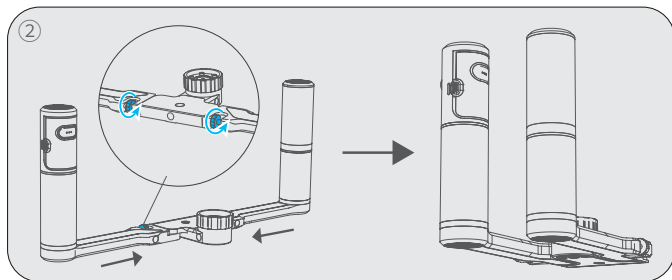
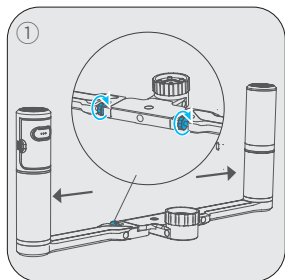


冷靴座

2.操作方式

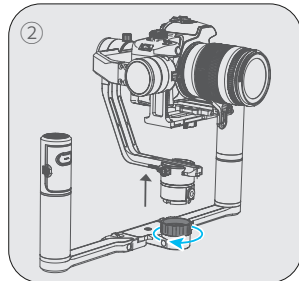
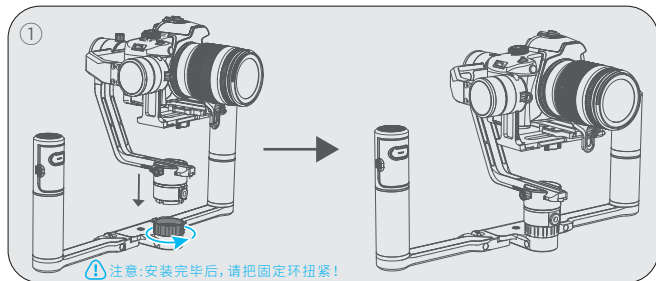
1 折叠臂的展开与闭合：

①展开折叠臂，扭紧接口处的两个固定滑轮；②扭松接口处的两个固定滑轮，闭合折叠臂。



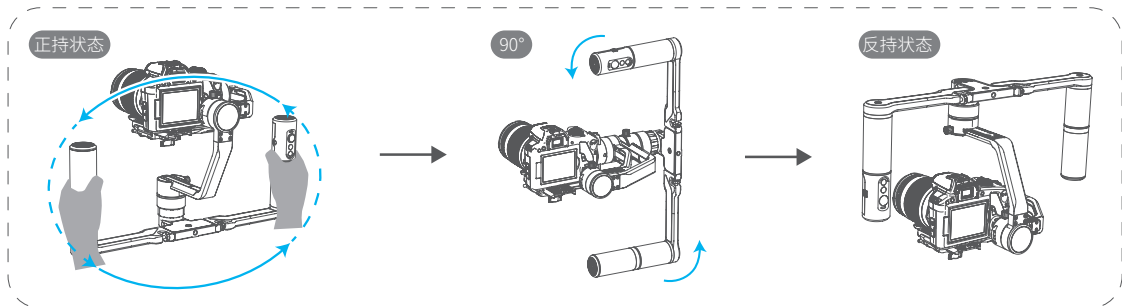
2 a系列稳定器的安装与拆卸：

①安装a系列稳定器，扭紧固定环；②扭松固定环，轻轻将a系列稳定器卸下。

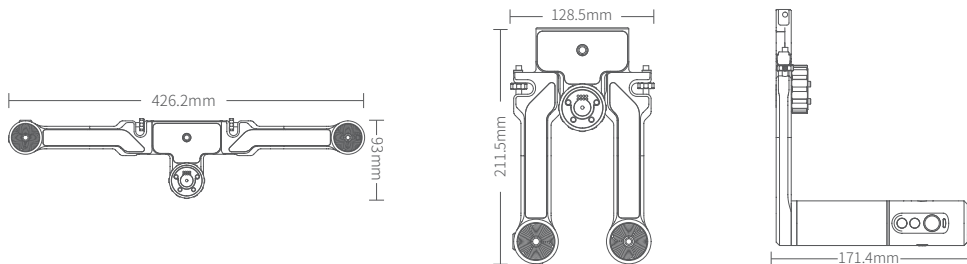


3.使用方式

双手持a系列稳定器可实现多种使用方式,如正持和反持等。以正持切换至反持为例:如下图所示,在正持状态下,双手握住手柄,开始旋转,转至90°时,交替双手,继续旋转90°,至反持状态。



4.参数



DISCLAIMER

Prohibit any user for any illegal purpose. Users will be responsible for all behaviors of purchase and use products.

The Company assumes no liability for any risks related to or resulting from the debug and use of this product (including the direct, indirect or third-party losses).

For any unknown sources of using, we will not be at any services.

The updating and changes of product firmware and program may cause changes in function descriptions in this user manual, please read the instructions carefully before upgrading the firmware and use the corresponding user manual.

You can get the latest user manual from the official website: www.feiyu-tech.com.

FeiyuTech reserves the right to amend this manual and the terms and conditions of use the gimbal at any time.

Guilin Feiyu Technology Incorporated Company

Website: www.feiyu-tech.com

E-mail: service@feiyu-tech.com

Tel: +86 (0)773 2320865

Due to software and hardware improvements, your actual product might differ from the descriptions and pictures in this user manual. You can get the latest user manual from the official website.

For more information, please visit our official website

